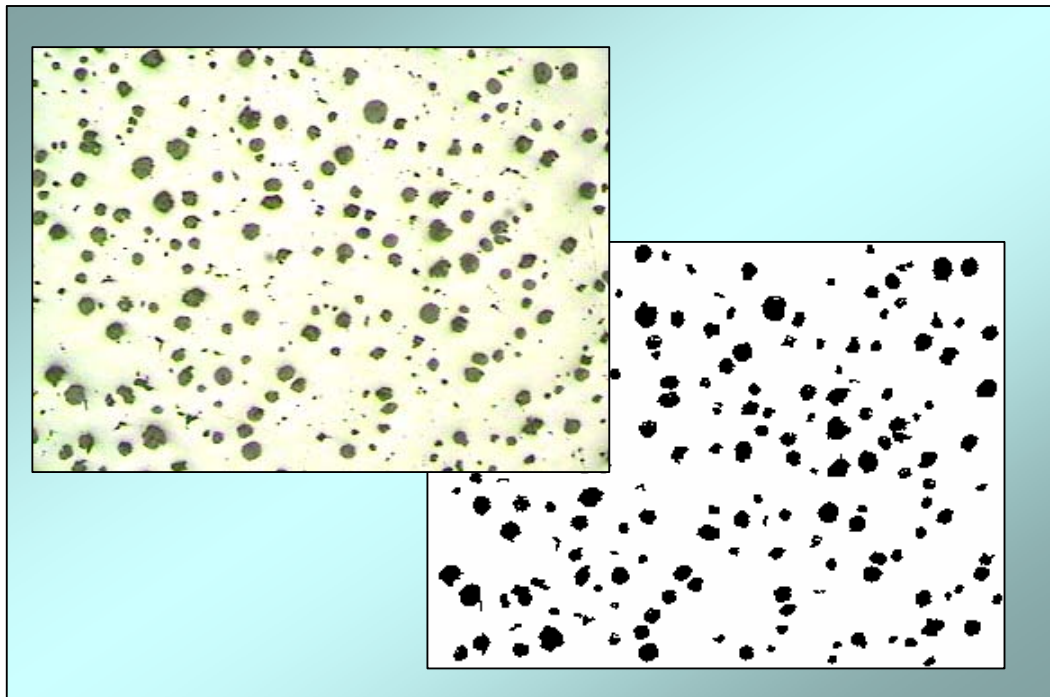


Spheroidal Graphite Image Analyzer Specifications on Program



NAKAYAMA Corp.

Outline of apparatus

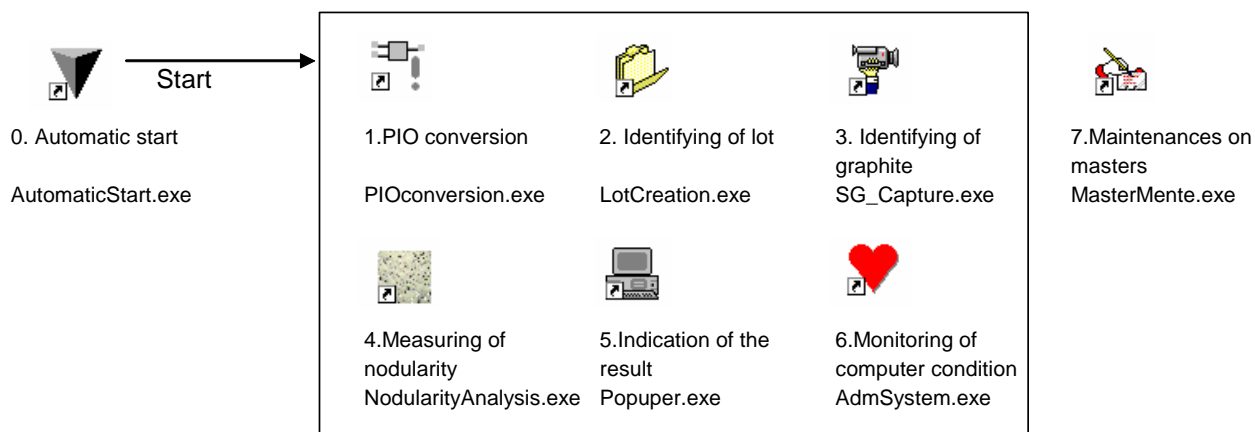
■ Outline of software program;

This program software is prepared to do graphite nodularity analysis and works in cooperation with the automatic polishing machine. The flow of its work is as follows.

1. Preparation of the information on the lot.
2. Setting of specimen.
3. Operation of the automatic polishing machine.
4. Analysis on the nodularity of graphite.
5. Pass/fail decision and printing-out.

■ Construction of software program;

The following program starts automatically as you boot the computer.



	ソフト名	機能
0. Automatic start	AutomaticStart.exe	Boot up the program on nodularity analysis.
1. PIO conversion	PIOconversion.exe	Communication with the polishing program.
2. Identifying of lot	LotCreation.exe	Preparation of the information on lot.
3. Identifying of graphite	SG_Capture.exe	Obtaining the data on graphite image in microscope.
4. Measuring of nodularity	NodularityAnlysis.exe	Measuring the nodularity.
5. Indication of the result	Popuper.exe	Indicate the nodularity and report errors if exist.
6. Checking of computer condition	AdmSystem.exe	Monitoring of computer condition such as battery or HD capacity.
7. Maintenances on masters	MasterMente.exe	Maintenances on masters

Identification of lot

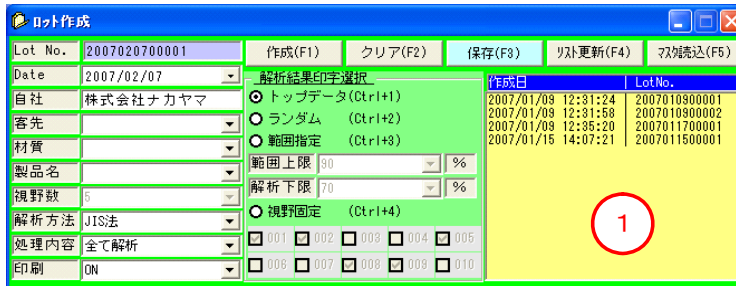
■ Explanation of Program Software



LotCreation.exe

Define the information on the specimen lot.

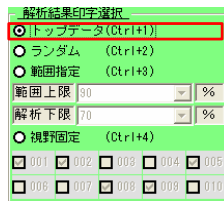
■ Explanation of Window



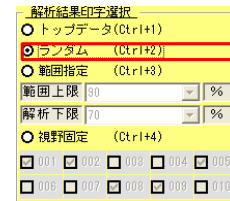
Input items

Free input ----- Own company
 List, free input ----- Customer, Material, Product
 List input ----- Date, Analysis method, Analysis content, Print-out

Selection of print-out results on analysis



Specify upper and lower limit of range



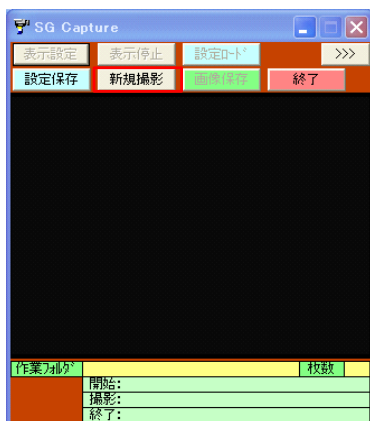
Specify measuring field

- Identify (F1) ----- Identify input information on the lot
- Clear (F2) ----- Clear inputted information
- Save (F3) ----- Update initial data on company, analyze method, analysis content and print-out
- Update list (F4) ----- Update inputted information on the lot
- Read master (F5) ----- Read master datum

■ Explanation of Operating Method

◇ Manual photograph

1. Execute [New photo]



2. In a case of take photo, execute [Save image],
In a case of ending, execute [Save photo].



◇ Automatic photograph

1. Receive starting signal.



2. Photo is taken after one second of receiving the photo signal.

3. Photo is repeated, if the photo signal is received again.

4. Photo is closed, if the end signal is received.

Analysis of Nodularity

■ Explanation of Program Software



NoduAnaly.exe

Nodularity analysis is done.

■ Explanation of the window

It is indicated [Auto mode] & [Manu mode]

Measurement method

Result of measurement

測定結果	測定方法 [JIS法]						黒鉛 = 110	パーティト = 160	パーティト			
	形状1	形状2	形状3	形状4	形状5	形状6	粒数 (/mm ²)	粒径 (um)	面積率 (%)	球状化率 (%)	フェアト (%)	パーティト (%)
合計												
平均												
視野 1												
視野 2												
視野 3												
視野 4												
視野 5												
視野 6												
視野 7												
視野 8												
視野 9												
視野 10												

- | | | |
|-------------------|-------|---|
| F1 Analysis start | ----- | Manual analysis starts.
(It can not operate during [Auto mode]) |
| F2 Clear | ----- | Indicated data are cleared. |
| F3 Set | ----- | Various setting is changed. |
| F4 Print | ----- | Printing is carried out.
(It can not operate during [Auto mode]) |
| F5 Store | ----- | Data are stored.
(It can not operate during [Auto mode]) |
| F7 Close | ----- | This system is closed. |

■ Explanation of Operating Method (Manual mode)

◇ Change to the manual mode

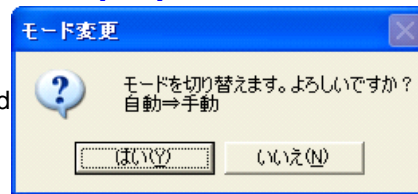
1. Run [F1 Clear]
2. Run [F3Set].
3. It is indicated the window [Set change].

Run [Mode convert].



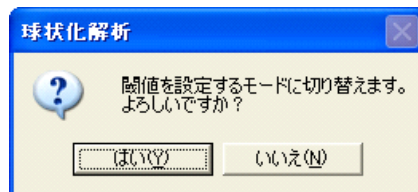
4. The Window as right side is indicated, then it selects [YES].

Stated above, the mode conversion is closed



◇ Setting threshold

1. Select [Threshold set] existed in the window [Set change].
The following message is indicated, then select [YES].



2. Screen of the window is changed to that of red as shown the following. Then carry out [F1Analysis start].

測定結果 (JIS法)										
	形状1	形状2	形状3	形状4	形状5	形状6	総数 (/mm ²)	粒径 (um)	面積率 (%)	球状比率 (%)
合計										
平均										
視野 1										
視野 2										
視野 3										
視野 4										
視野 5										
視野 6										
視野 7										
視野 8										
視野 9										
視野 10										

■ Explanation of Operating Method (Manual mode)

◇ Printing

1. Make a data into indicated state with carrying out the data storing or treating.
2. Run [F4 Print].

It will be indicated [Lot information].

ロット情報	
日付	2007/02/13 11:58:21
ロットNo.	
測定方法	JIS法
会社名	株式会社ナカヤマ
客先名	
材質	
製品	
印刷方法	TOP 5
視野	視野 9 82.14%
	視野 7 76.19%
	視野 3 67.69%
	視野 4 66.49%
	視野 6 65.97%
球状化率	71.70%

Carry out printing.

It is possible to edit areas in the window above.

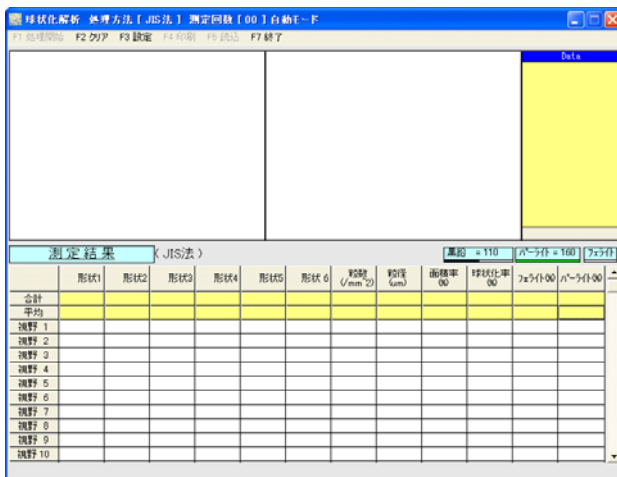
Change please, as a need arises.

■ Explanation of Operating Method (Automatic mode)

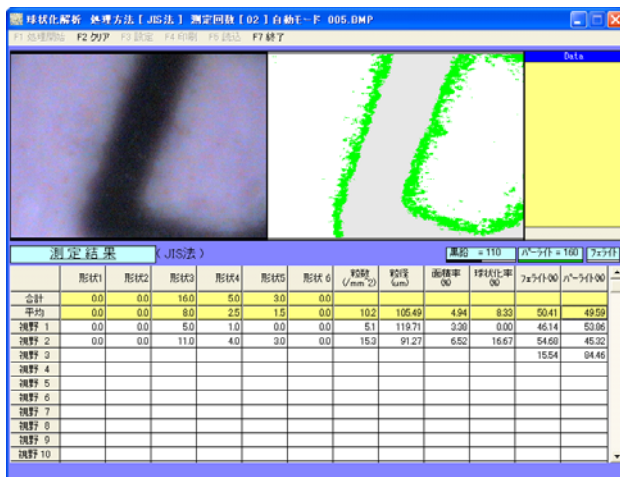
◇ Automatic analysis

In the automatic mode, it cannot run but [F2 Clear], [F3 Set] and [F7 Close].
During the automatic analysis, any manual operation is unable to run.

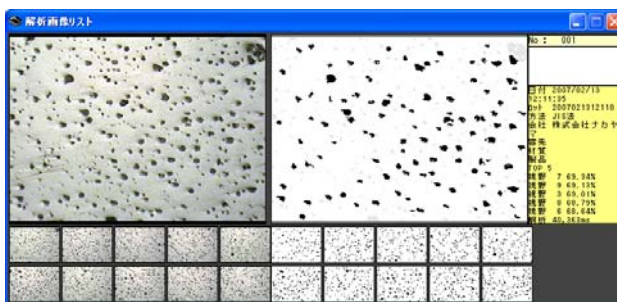
The window waiting for automatic analysis



The window during automatic analysis



The list during analysis



Indication of Judgment on Analyzed Result

■Explanation of Software Program



Popuper.exe

Indication of judgment on analyzed results and errors are shown.

■Explanation of window screen

The window on judgment

OK Threshold for NG judge is set

Convert to the error indication

Close the window

Nodularity is indicated

information of the lot is indicated

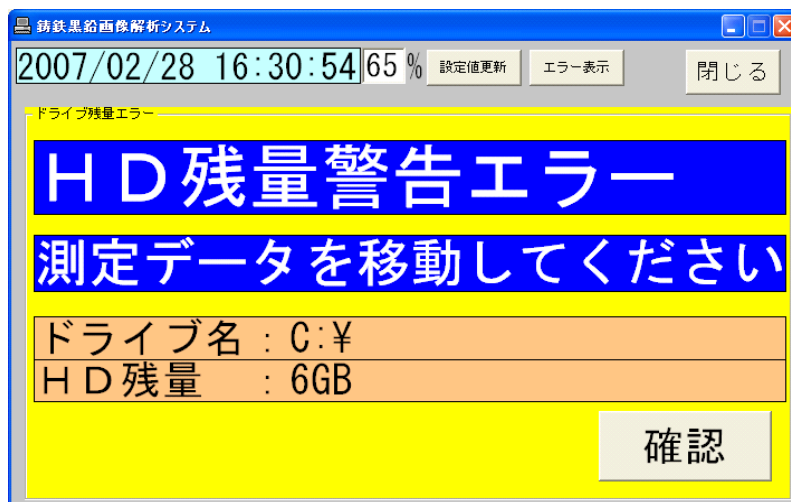
OK or NG is indicated

The window on error

■ Explanation of window screen

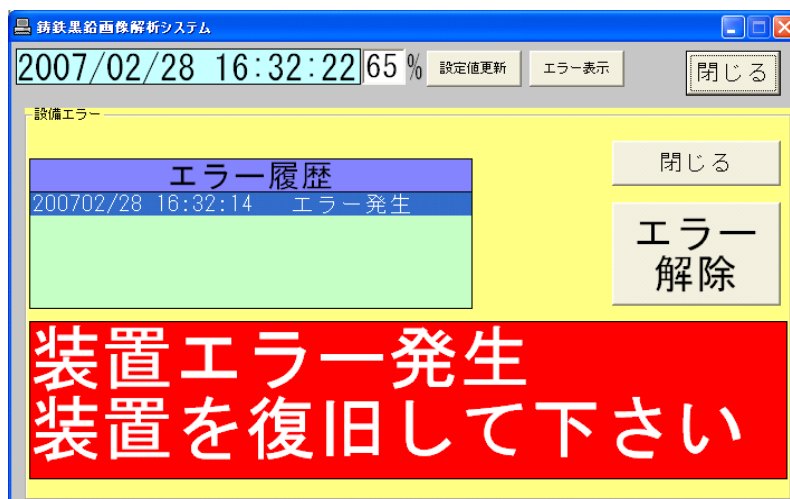
Error on the remains of drive

It is indicated when the remains of HD becomes small.
After increasing of the remains of HD through deleting of data, push [\[Confirm\]](#).



Error on the equipment

Error occurs at the automatic polisher.
Please carry out restore work, following to the indication of wquipment.
After the restore work, push [\[Error corrects\]](#).



Monitoring of Computer Condition

■ Explanation of software program

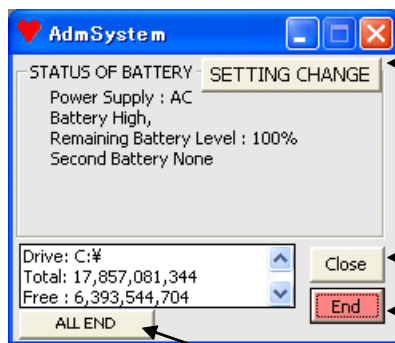


AdmSystem.exe

Monitoring of battery of computer and capacity of hard disk are carried out.

■ Explanation of main window

Main window



Setting window is indicated

Window is closed.

Soft program is finished.

Computer is shutdown.

Explanation of setting window



Remains of battery at shutdown
Duration between converted time to
battery and shutdown

Drive to be monitored

Remains of warning HD

Update setting value

Master Maintenance

■ Explanation of software program



MasterMente.exe

Editing of various master is carried out.

■ Explanation of window screen

It opens the master shown in left side

It closes the maintenance

It adds data

It updates the master

This is editing zone

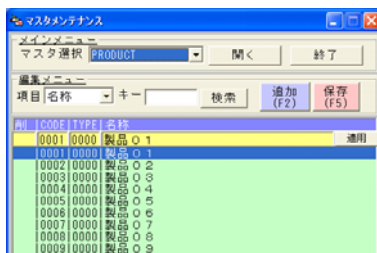
It is indicated the information on master

Master on customers

◇ Operating method

1. Specify a master to be edited.
2. Run [Open].
3. It edits data at the editing zone.
If enter key is pushed within the editing zone, edited data are updated as same as pushing [apply].
4. If you want additional editing, run [Add (F2)].
5. When editing is finished, run [Save (F5)].

Master on products



Master on materials

